



LOUISEN LUND

LERNEN LEISTEN LEBEN



Boarding School | Full Day Grammar School | IB World School |
Primary School



Boarding School, Full Day Grammar School, IB World School, Primary School

The school of today wants to prepare your child for tomorrow, nurture your child's individual personality, meet tomorrow's career requirements and strengthen social awareness. However, most of all, we want your child to be happy at school.

Education is the greatest gift of all.

High level of education

Living languages. Combining technology and sport in a fun way. Understanding values as a guide to life. Experiencing internationality as something entirely natural. Identifying and nurturing talents. At Louisenlund, we achieve high educational levels through an optimum combination of lessons and afternoon leisure activities. We devote a great deal of time to our students.

Education is a journey not a race.





School education at Louisenlund

Paving the way for a successful future

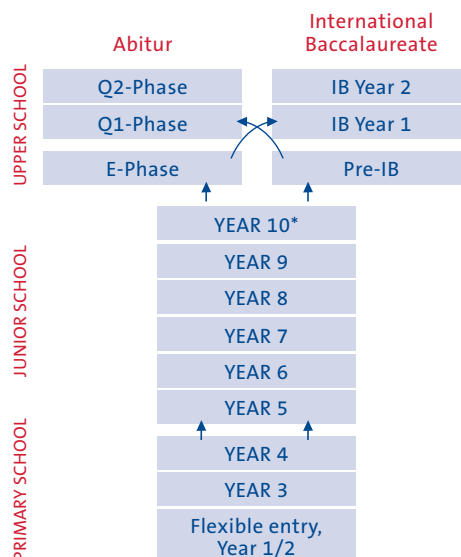
The Louisenlund Foundation is a state-recognised G9 grammar school* with over 450 pupils. For 70 years, Louisenlund has stood for the harmonious interplay of school and leisure. To understand language diversity, bilingual teaching, internationality, individuality as enrichment – this and more is the basis for school education in Louisenlund. In September 2015, the Louisenlund Foundation also opened its doors to a one-day half-day primary school. Since then, students from the region have been able to pursue an uninterrupted educational biography.

Education and the underlying pedagogical principles

The pedagogical principles applied by Louisenlund are driven by vision and passion. At the same time, the school is unconditionally committed to high educational standards. Our mandate is to give young people the ability to creatively shape the future that they are seeking. At the core of all our activities are

people. In addition to all the skills, qualifications and standards that must be imparted, the ultimate goal is to provide young people with a broad education. At Louisenlund, the intellectual and pedagogical foundation is inspired by the modern pedagogical approach developed on the basis of the principles espoused by Kurt Hahn. Teachers, educators, mentors and coaches seek to identify and respond to the needs of the individual. For this reason, the focus for the adults is on relationships, community, esteem and attitude. Reflecting these ideals, school education at Louisenlund is primarily dedicated to fostering broad-based personal development. Inherent in this approach are such elements as vigour, humanitarianism and a sense of responsibility towards the community.

**Since the school year 2018/19 Louisenlund is again a G9 grammar school. All pupils who were enrolled in the 5th grade for this school year complete the Abitur after 13 years.*



Plenty of time for education

The all-day stay on the educational campus and the living together in the houses of the boarding school have a special value. The students experience intensive democratic committees such as student representation, student parliament or participation in the globally active „Model United Nations“. In the „Politics Guild“ or the „Debating Society“, impressions and views are critically and constructively treated and processed. But theatre, music and art projects also create a very special living space in Louisenlund. The wide range of sports on offer and the social commitment to the region also contribute to recognising and developing one's own strengths.

School leaving certificates

In addition to the Abitur, Louisenlund has also been offering an internationally recognised school leaving certificate in English since 2008. The so-called „International Baccalaureate“ or IB Diploma as well as the Abitur pursue the goal of educating curious, inquisitive young adults. They are put in a position to do so, to meet the economic, ecological, social and political challenges of the future. In this way, they can help shape a peaceful world with knowledge

and conscientiousness. In addition, IB graduates receive the American High School Diploma.

Culture of positive reinforcement

Appreciation and a culture of recognition are firmly anchored in our educational concept. Testimonials are therefore more than just a certificate with school grades. Graduates receive a certificate in which character and personality-forming aspects are also documented. They receive development reports that also pay tribute to extracurricular commitment. In particular, the commitment of the individual to the community is comprehensively documented. Performance and success are honored without denouncing weaknesses. Thus the „Lunder“ become strong personalities.

The broad-based conveyance of knowledge forms the basis of school education at Louisenlund.

**All pupils who were enrolled in the 5th grade in school year 2018/19 complete the Abitur after 13 years.*



Louisenlund a plus-MINT school



Science | Technology | Engineering | Mathematics

At Louisenlund, exceptionally talented students can make the most of their potential and extend their skills in and enthusiasm for mathematics, information science, natural sciences and technology.

Known as plus-MINT, a four-year training course from Year 9 to 12 takes boys and girls to the Abitur school leaving certificate with majors in the STEM subjects. Up to 18 students per year receive a science-based schooling in close collaboration with researchers and business.

Louisenlund – Northern Germany's first plus-MINT talent development centre

- + STEM curriculum for top educational standards
- + hands-on learning in the classroom
- + discovery-based learning e.g. on board the school's own research ship
- + internships with partners from business and science





Exploratory learning on the water

Louisenlund is the first school in Germany to have its own research ship. The “Kurt Hahn” is a motorised two-master with a fully equipped small research laboratory, on board which scientific experiments and investigations can be performed directly on the high seas. This gives weather analyses, zoology, botany, water ecology and navigation an entirely new dimension for our students.

Our research ship, the “Kurt Hahn”

Length: 17 m | Width: 4 m | Weight: 22 t | Type: Wood
Berths: 10 | Sails (100m²): Jib, foresail, mainsail, mizzen

Plus-MINT at Louisenlund – nurturing outstanding talents





Abitur at Louisenlund

Solid, acknowledged and broad-based education

In the Upper School, Louisenlunder students choose between the German Abitur and the International Baccalaureate Diploma.

The state-recognised Abitur provides a solid basis for the students' future, allowing them to matriculate at a university in Germany or a German university of applied sciences or to pursue a high-quality traineeship. Needless to say, Louisenlund Abitur holders can also apply for admission to universities in other countries.

Four profiles are available

- + foreign-language profile
- + scientific/ecological profile
- + social science profile
- + aesthetic-artistic profile

Although we generally offer four profiles, student demand determines whether they can all be provided at any given time. In the upper profile level, the core Abitur examination subjects are supplemented by thematic focal points. One core profile and two supplementary profile subjects must be selected.





In particular, the interdisciplinary, project-related work is supported. And this approach pays off: 25 percent of Louisenlund high school graduates have had a 1 before the decimal point in recent years. More than half of our students achieved an average grade of at least 2.5. In addition to the mentor's reports, which all graduates receive, some students receive an additional certificate each year on the recommendation of the college. In this certificate they are honoured for their above-average commitment. Often these are students who have been active in the student representation or in the student parliament, or students who have acted prudently and responsibly in the guilds or houses in the interest of the community. The productive learning climate between pupils and adults leads to particularly good results in Louisenlund. "Awakening interests, strengthening inclinations, training personalities" – the good completion rates of our students confirm this teaching approach.

Abitur – a strong basis for the future

IB Diploma

Global matriculation certificate



The International Baccalaureate Diploma (IB) is an internationally recognised school leaving certificate, allowing holders to matriculate at universities all around the world.

After completing Year 9, students at Louisenlund decide on whether they want to sit for the IB Diploma or the German Abitur. IB Diploma lessons are in English. Louisenlund is one of 84 accredited IB World Schools in Germany.

International school-leaving certificate in the English language

The IB Diploma provides an internationally accepted qualification for entry into higher education. Initiated in 1968 by the United World Colleges and UNESCO, the non-profit IB umbrella organisation has evolved into a global educational institution. Today, strict standards guarantee the high quality of education at over 5,100 accredited schools, known as IB World Schools. In the spirit of international understanding, the IB's high educational standards aim to support inquisitive and socially committed young people in tearing down intercultural boundaries and furthering global cooperation.





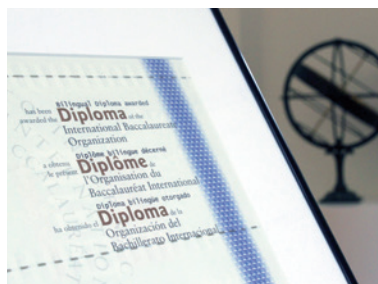
“The IB Diploma attaches great importance to the distinction between good and excellent students. It’s no wonder that the best universities in the world welcome the top IB graduates.”

Christine Brinck, DIE ZEIT, 18 February 2008

The IB at Louisenlund offers students the opportunity of “attending an international school at their very own front door” thanks to the use of English as the language of tuition as well as the multicultural backgrounds of the other students.

Since 2019 Louisenlund is officially an accredited member of the New England Association of Schools & Colleges (NEASC). Louisenlund has thus decided to its expand portfolio of degrees. Besides the Abitur and the IB Diploma, there is now also a High School Diploma, awarded to the students in the IB Diploma Programme who have completed the programme and attained to a minimum standard set by the school.

IB Diploma – global, intercultural, high academic standards



Round Square

Worldwide network of partner schools



As a Round Square school, Louisenlund is part of a worldwide alliance of more than 200 schools with similar reformist educational goals.

Round Square schools attach particular importance to developing the personality in addition to excellent school education. They pursue international cooperation and exchange with the aim of furthering humanity, mastering challenges and raising international awareness.

Fifth-graders already start taking part in Round Square conferences. Accompanied by their teachers, our students fly to the host school,

live with local families and actively represent Louisenlund at various events. English is of course spoken to ensure that all the nationalities understand each other. In the spirit of what are referred to as IDEALS, international projects are initiated, environmental issues discussed critically and cultural exchange in general promoted at the conferences. Round Square puts internationality into practice at a very early stage.





What are IDEALS?

- + Internationalism: straightforward worldwide student exchange between partner schools
- + Democracy: enhancing and reinforcing democratic values through heightened student responsibility
- + Environment: the environment and sustainability as part of the educational focus
- + Adventure: promoting the discovery of your own personality and encouraging its development
- + Leadership: creating personal qualities through responsibility, positive awareness, fairness and justice
- + Service: taking responsibility in society by planning and implementing real projects

Round Square – students conversing with the world





Guilds and activities

Promoting talent, teamwork, creativity and community service

Extra-curricular activities, guilds (working groups), courses and individual activities supplement the holistic educational approach pursued by the Louisenlund Foundation.

Louisenlund graduates are broadly educated, willing to take responsibility and able to make their way successfully in the world.

By participating in the services, Louisenlunder students develop a strong social awareness, further their individual strengths and learn to take responsibility for themselves and others. They can select from a wide range of different activities – from sport and culture to business, politics and social affairs.





1

Services

- “Service to society”
- Compulsory

2

Guilds

- Voluntary activities in different areas
- Compulsory if selected
- Organised in lesson form

3

Courses

- Blocked events, e.g. workshops
- Mostly held on weekends
- Individual courses may form part of lessons
- Some voluntary, some compulsory

4

Individual activities

- Individualised learning
- Individual hobbies and activities
- Coordinated by the Learning and Talent Centre

5

Open activities

- Offered on many days
- Students can decide to participate spontaneously if and when they like

compulsory

voluntary



Living and learning at Louisenlund

Schooling and leisure combined

At Louisenlund, you are a student with passion. “Once a Lunder, always a Lunder” is the motto. Thus, providing shelter within the school community, encouraging close friendships and spending time together enjoy the highest priority.

Boarding school life

Located in the beautiful countryside on the banks of the Schlei, Louisenlund offers a fixed framework in which students are able to go about their daily routines. The transparent structure and the naturalness with which lessons and afternoon activities are combined make the adventure of growing into an adult that much easier for many boarding school students.

Lessons are held in the morning in small groups. In the afternoon, the students tackle with joy and great dedication the challenges posed by the activities that they have selected in what are known as “guilds”. The Louisenlund

boarding school students then spend the evening hours in the company of their best friends. The senior students at the boarding school learn and live in the idyllically situated castle part, while the young ones attend lessons and take part in leisure activities at Hof Louisenlund.

The girls’ and boys’ rooms are segregated and located in separate parts of the grounds. Mutual visits are possible only subject to agreed rules. Many of the dedicated Louisenlund teachers also live on the boarding school grounds. In some cases, they live in the houses together with the students as “house parents”. In this way, a relationship of mutual trust and understanding for the students’ individuality can flourish between students and teachers.

Full day grammar school

Students from the local region are also welcome to attend Louisenlund as a full day school, spending a great deal of their time on the school grounds but



returning home to their parents in the evenings. The “LundShuttle” collects students from the local region and brings them to Louisenlund. Lessons start at 8:15 in the morning. The day students at Louisenlund also benefit from an individualised educational approach, innovative ideas and modern teaching methods. And after lessons are over, they can also partake of the wide range of activities offered by the school until the evening. Together with their friends they can sail, do pottery, attend drama classes, play tennis or golf, participate in model building, take part in the activities of the Technical Relief Agency or the politics guild, try their hand at fashion or design, play musical instruments and much more. Most of the leisure activities provided by the day school are held directly on the school grounds. Lessons and out-of-class activities are coordinated to optimum effect and a great deal of attention is paid to ensuring that all students join the community.

Students receive assistance with their homework, while additional activities seek to support the children during their educational journey. Many teachers live on the school grounds, assisting the day students outside the classroom as well. This gives rise to a professional basis of familiarity that provides good foundations for understanding and

supporting the individuality of each student. Students, and also their parents, can make optimum use of the opportunities provided by a full day school. Lessons and leisure activities are synchronised in terms of timetabling and content, and all activities are easily accessible for students on the school grounds. The parents, for their part, have additional time on their hands that they can use in the knowledge that their children’s daily routines are pedagogically sound and take place in a healthy environment.

Our students learn and live in the sheltered environment provided by the Louisenlund community.



Vocational orientation at Louisenlund

The career counsellor prepares students for professional life

The Louisenlund boarding and day school is aware of its responsibility for preparing students for their later careers. For this reason, Louisenlund provides different forms of career orientation during the time that students spend at the school. The career counsellor advises students on career options.

In Years 8 and 10, students gain preliminary experience of the working world by taking part in various practical work experience sessions. They work at companies of their choice and find out what day-to-day working life is like. In a final report, they describe their impressions of the work that they have experienced. This provides a comprehensive insight into the working world without tying the students to a particular career direction.

Year 10 students start receiving career counselling. The career counsellor helps them to select the profile subjects that they will require later on for their university studies in a given area. IB Diploma students are also advised on the combination of subjects they should take

to ensure that they are ideally prepared for the university degree that they are seeking.

The support is intensified substantially in Year 11 and IB Year 1. Working with the Louisenlund Alumni Association, the school offers applicant training as well as simulated job interviews. The Louisenlund Alumni Association organises an annual job fair for Year 11, IB Year 1, Year 12 and IB Year 2 to give students a greater insight into different aspects of the career world.

In addition, a biannual university day is held at Louisenlund, where representatives of national and international universities present details of their degree courses. In this way, the students are able to meet representatives of the universities that they want to attend and to discuss the subjects that they wish to select.

Career counsellor – optimum preparation for entering the career world

Louisenlund Alumni Association

Global network of Louisenlund alumni

„Once a Lunder, always a Lunder“ – this motto does not only apply during the school years spent at Louisenlund. Even many years later, Louisenlund graduates maintain contact with each other and with “their” school. The Louisenlund Alumni Association provides the framework for this.

Established in 1961, this association of former students and employees of the Louisenlund Foundation nurtures and strengthens relations with the school even after the members have long since moved on. Today, Louisenlund alumni work and live in more than 30 countries around the world. This multi-layered network of private and business contacts is an enrichment for each of its members, for the Louisenlund Foundation and also for the current Louisenlund students. Initially, the Louisenlund Alumni Association devoted its entire attention to the Louisenlund

boarding school and its students, helping to fund specific projects and contributing to the Foundation Scholarship Fund. In addition, it bestows on students awards for outstanding achievements in the fields of sport, sciences and languages.

These days, it pursues a substantially wider range of activities such as member management, fundraising, organising anniversaries and many other things as well. The annual career counselling seminar for senior students is a particular highlight, offering vocational orientation and preparation in the form of practical work experience.





Trust as the basis for learning

The school management and many teachers live on the school grounds and also accompany the pupils outside the classroom. This creates a professional relationship of trust as the basis for an optimum learning environment.

Louisenlund – holistic approach, holistic personality development

Continuity and friendship

Louisenlund has been combining learning, achievement and living since 1949. This is where students experience the daily challenges of their schooling with joy and commitment. And this is where friendships for life are made.

Becoming a strong individual in the shelter of the school community





Primary School Louisenlund

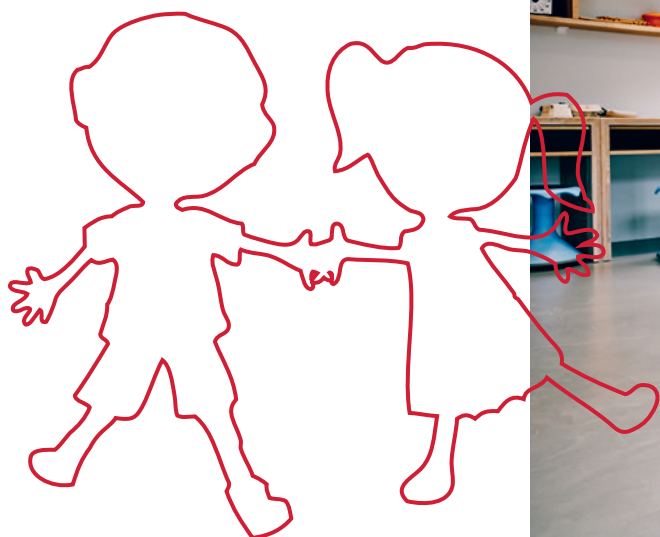
To help small children become great individuals

The half-day primary school with an open afternoon programme and its own world of research is an innovative and highly modern learning location and is located on the idyllic educational campus of the Louisenlund Foundation. Learning guides use a variety of teaching methods to shape individualised and research-based learning and reliably accompany children through school time – in a protected room and in small learning groups.

Small children are enthusiastic explorers and explorers. This natural curiosity sustains and encourages the primary school and encourages students to actively shape their learning. They learn to act responsibly and value-oriented and acquire media and communication skills. STEM is a central learning focus. Mathematics, computer science, natural sciences and technology have been the focus in Louisenlund from the beginning of their school years. This turns small children into strong and self-confident personalities.



14 + 27 =



The research world Louisenlund

The research world and the open learning landscape of the Louisenlund primary school are living, learning and development spaces in which learning with all the senses is made possible. Whether in a group or for individual work, in the workshop or in the playground – the primary school offers plenty of space to adapt to the individual needs of primary school pupils and includes areas of concentration and relaxation.

The unique combination of pedagogy and architecture in the primary school provides pupils with learning spaces that are as diverse as learning itself. Two generous, light-flooded learning landscapes are the ideal environment for the individual learning of the children. At modern individual workstations, the primary school pupils work independently in structured learning arrangements and thus become architects of their own learning. As learning companions, teachers support the pupils in co-constructive learning processes in the spirit of Maria Montessori's "Help me to do it myself".

Cooperative phases in comfortable group rooms promote the children's teamwork and communication skills. A play and recreation area invites children to relax, read and play and is the starting point for the extensive and varied extra-curricular afternoon activities. The new building is the logical architectural implementation of our unique pedagogical concept and the ideal place to learn, perform and live.

Research world Louisenlund – innovative and state-of-the-art learning location

Louisenlund Foundation

70 years of tradition and modern management

The founding family

Ingeborg Princess of Schleswig-Holstein is passionate when it comes to “our Louisenlund”. A member of the Louisenlund Foundation’s founding family, she has been chair of the Board of Trustees and the Executive Board since 2003. “Louisenlund is a wonderful dream that we can all experience together,” she often says.

For decades, the ducal family has stood for continuity and innovation at Louisenlund, defending values and espousing a modern view of the world together with high educational standards and a holistic development of the individual’s personality. This vision pursued by Duke Frederic of Schleswig-Holstein was originally ahead of its time. He established the Louisenlund Foundation in 1949 in accordance with the modern educational principles of his friend and co-founder Kurt Hahn. In doing so, he laid the foundations for a school which to this very day allows young people to live up to their full potential at all levels and to optimally prepare for a self-determined life.

His successors, Duke Peter of Schleswig-Holstein, Christoph Prince of Schleswig-Holstein and, most recently, Ingeborg Princess of Schleswig-Holstein have remained true to this vision, carrying on the principles underlying the school in a self-confident and focused manner from generation to generation. Applying great care, they appoint the Louisenlund management from modern executives. Conscientiousness, awareness of their great responsibility and the vision of merging modern education and individual personalities are the qualities that link the founding family with the management team.



Chairs of the Louisenlund Foundation: Duke Frederic of Schleswig-Holstein (1949-1965), Duke Peter of Schleswig-Holstein (1965-1980), Christoph Prince of Schleswig-Holstein (1980-2003), Ingeborg Princess of Schleswig-Holstein (from 2003, member of the Executive Board from 2003 to 2005, thereafter Chair of the Executive Board)

Head of Louisenlund Foundation



Dr. Peter Rösner has been head of the Louisenlund Foundation since 2014. True to the motto „Today we are good, tomorrow we are better“, he always strives to head for the future in the special challenges of the present. His vision is always the focus of his actions.

The school management



Damien Vassallo is head of the IB. It is a matter close to his heart that the students become strong individual personalities. He manages the IB Diploma Program with foresight and as an American he stands for the internationality and open-mindedness of the Louisenlund educational campus.

Dr. Kerstin Tschekan is the headmistress of the grammar school. Education – that’s what this place is all about. She tirelessly turns the wheels and cogwheels of education optimization. It has to be modern – but also authentic. It must be balanced – but also demanding. Resist the future – but value-oriented. The education provided in Louisenlund is the foundation for our students’ professional careers.

Claudia Hoeschen is headmistress of Louisenlund Primary School. For her, successful education in primary school means perceiving and maintaining the natural curiosity of the children. To respect the children with their own individual personality and to encourage and challenge them individually. To take their questions seriously, to develop them further together and thus to accompany and support each child in its own learning process in an optimal way.

Legal notice

Published by: © 2019 Louisenlund Foundation,
Louisenlund 9, 24357 Güby, Germany
T +49 4354 999 0, www.louisenlund.de/en
Responsible for the content: Dr. Peter Rösner
Editorial team: Sven Meier, Daniel Hoth

Images: Jo Bayer, Berlin / Oliver Maier, Kiel /
Christian Irrgang, Hamburg / Daniel Hoth und Sven Meier,
Louisenlund Foundation / Archive Louisenlund Foundation
Layout: Hilke Bertsch, Fleckeby, www.zimtkeks.de
Printed by: Druckerei Weidmann, Hamburg

